

GARDEN LAYOUT PLAN FOR 'HAMMONS COURT' @ 1:200.

**THE COURTYARD GARDEN.**  
 BOUNDARY CURVED GARDEN WITH NEWLY Laid KERASTONE PAVING, OAK PERGOLA WITH TABLE AND CHAIRS, SPROUTING LEAD WATER FEATURE AND SIMPLE SWATHES OF HERBACEOUS PLANTING TO SUIT THE DRY CONDITIONS. PLEASE SEE HARDWARES SPECIFICATIONS A, B, C, D & Di. AND CONSTRUCTION DRAWING NUMBERS 1 & 2.

**THE HERB GARDEN.**  
 NEWLY FENCED HERB GARDEN WITH SCENTED PLANTING AND JASPER BENCH. NEWLY PLANTED HEDGING DIVIDES THIS AREA FROM THE CIRCULAR GARDEN AND BLACK IRON ARCHES LEAD THE WAY THROUGH. ALL BORDERS ARE EDGED WITH BRICK PAVERS. PLEASE SEE SPEC. AND Di. AND CONSTRUCTION DRAWING 3.

**THE CIRCULAR GARDEN.**  
 NEWLY FENCED GARDEN WITH CIRCULAR LAWN AND MIXED HERBACEOUS PLANTING TO INCLUDE SHRUBS, GRASSES AND PERENNIALS IN A CLASSICAL ENGLISH STYLE. A SOUTH FACING JASPER BENCH GIVES VIEWS ACROSS THE GARDEN AND A GRASS PATHWAY LEADS THROUGH TO THE WILD GARDEN. BORDERS ARE EDGED WITH BRICK PAVERS. NEWLY PLANTED HEDGING DIVIDES THIS GARDEN FROM THE WILD GARDEN. PLEASE SEE SPECIFICATIONS A AND Di.

NEWLY PLANTED OLD FASHIONED FRUIT TREES SUCH AS PEAR, PLUM AND GREENING AGE.

NEWLY PLANTED LINE OF MULTI-STEMMED AMELANCHIER FROM A STRONG SCREEN FOR PRIVACY.

NEWLY PLANTED SIDING LINE OF HEDGING IN FRONT OF EXISTING ROOF.

NEWLY LAID BRICK PAVING FORMS A PATH RUNNING FROM THE COURTYARD TO THE GRAVELLED CAR PARKING AREA. NORTH FACING BORDERS LINE THE PATH PLANTED WITH SHADE LOVING PLANTS. A BLACK IRON PERGOLA RAISED WITH CLIMBERS LEADS THE WAY THROUGH TO THE WILD GARDEN. PLEASE SEE HARDWARES SPECIFICATION G AND CONSTRUCTION DRAWING NUMBER G1.

**THE WILD GARDEN.**  
 AN APPLE TREE AVENUE LEADS THE WAY DOWN TO THE TENNIS COURT AND FOOTBALL/CRICKET AREA. LARGE SWATHES OF WILDFLOWERS AND GRASSES LINE EITHER SIDE OF THE AVENUE. NEWLY PLANTED HEDGING DIVIDES THIS GARDEN FROM THE TENNIS COURT AREA ALONG WITH A PAIR OF WILD CHERRY TREES AND A MAIZE WHICH ALSO ACTS AS A FOCAL POINT.

**COMPOST AREA.**  
 PLEASE SEE HARDWARES SPECIFICATION H.

NEWLY LEVELLED AREA FOR FOOTBALL, CRICKET AND TRANVOLUNTING. 45° GRASS BANKS RETAIN THIS AREA. PLEASE SEE SOFTWARES SPECIFICATION 5.

NEWLY PLANTED MAIZE AND LIQUID AMBAR.

NEWLY PLANTED LIQUID AMBAR.

Project: **MR AND MRS BOOTH.**

Date: **JUNE 2005.**

Scale: **1:200.**

Job no: **081.**

Drawing by: **SARA BARRAUD.**

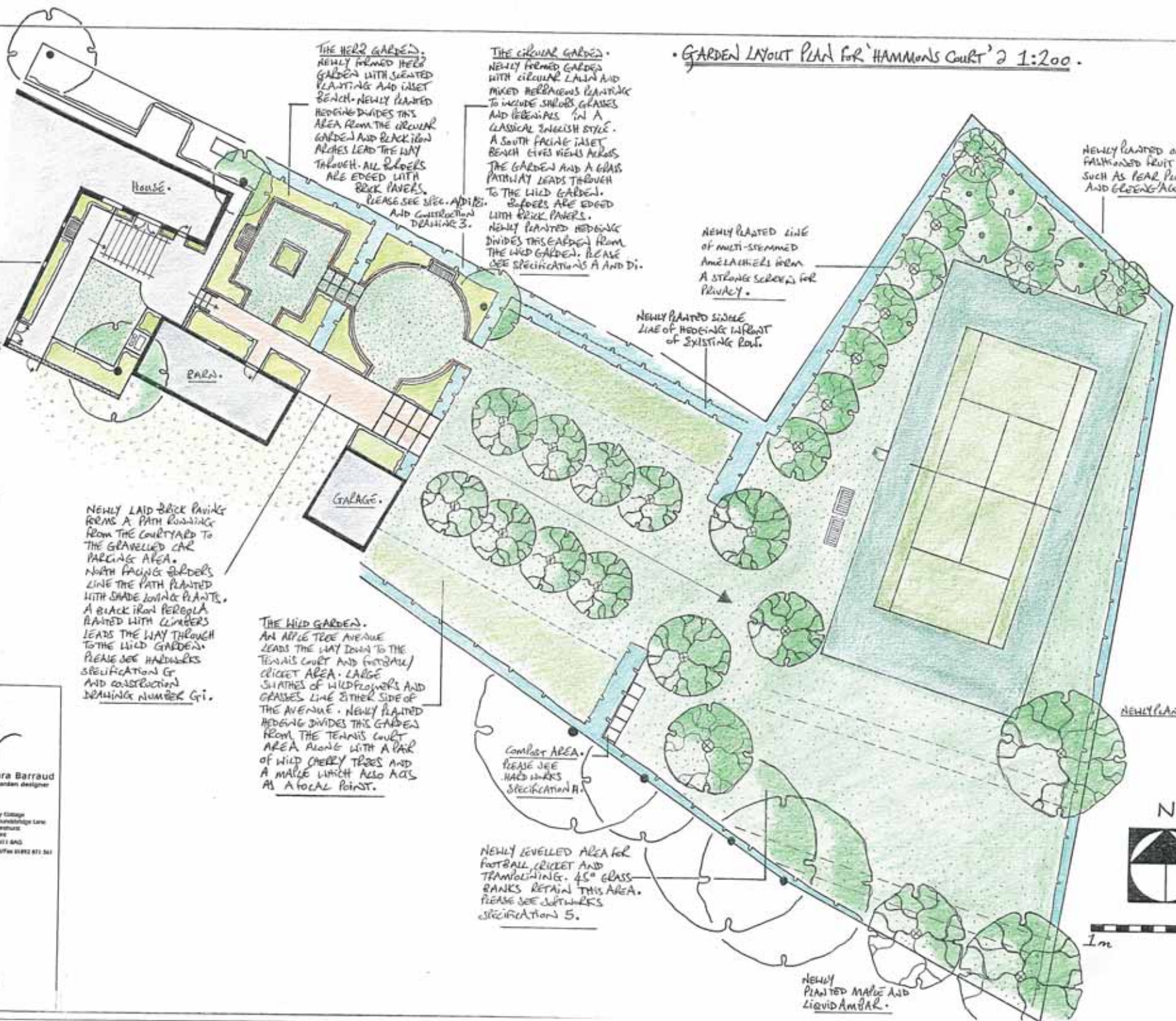
Revisions:

Drawing title: **GARDEN LAYOUT PLAN.**

**Sara Barraud**  
 garden designer

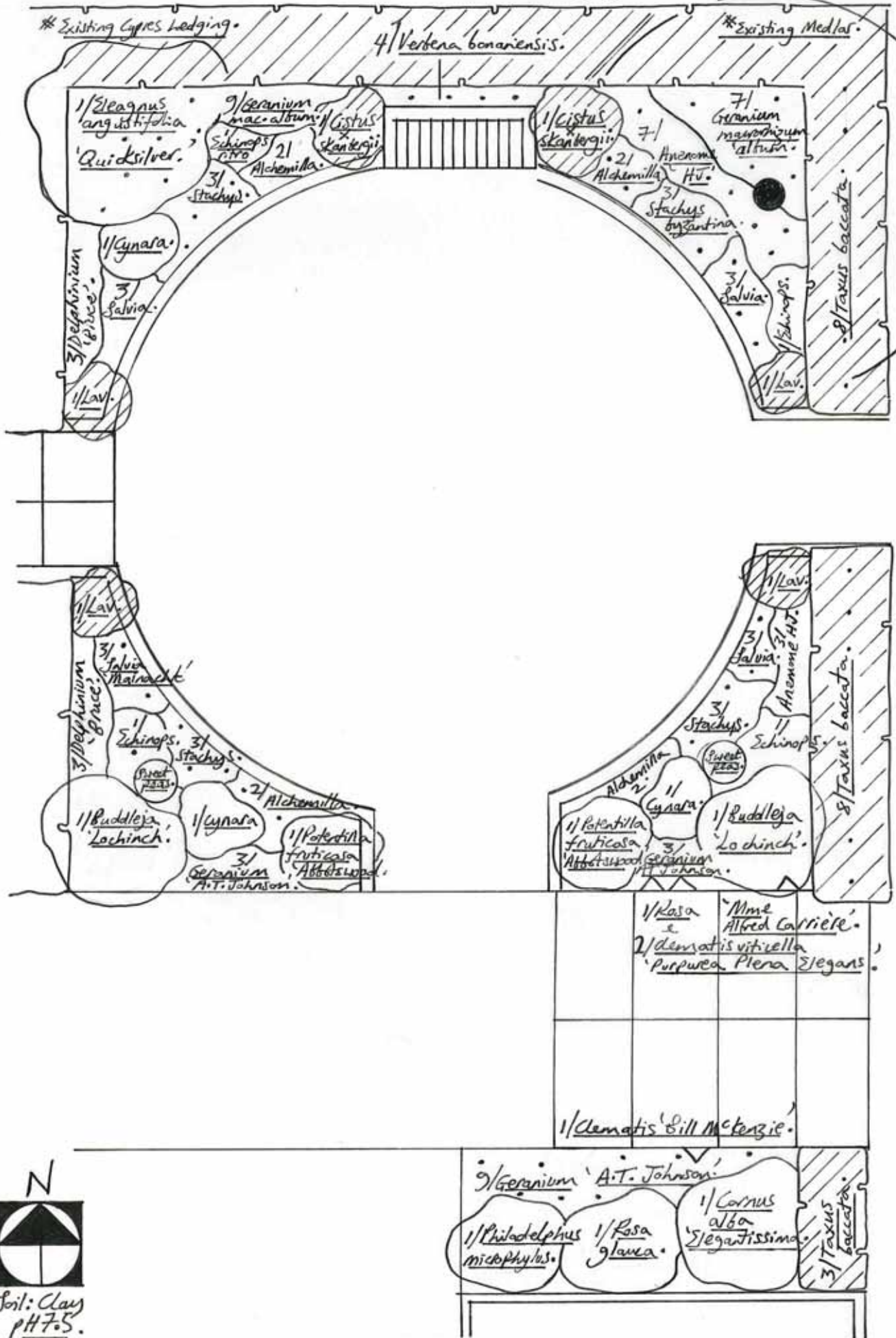
My Cottage  
 Poundridge Lane  
 Poundridge  
 Hill 11 B&D  
 Northants NN12 8JL UK

© Sara Barraud. All measurements to be checked on site.

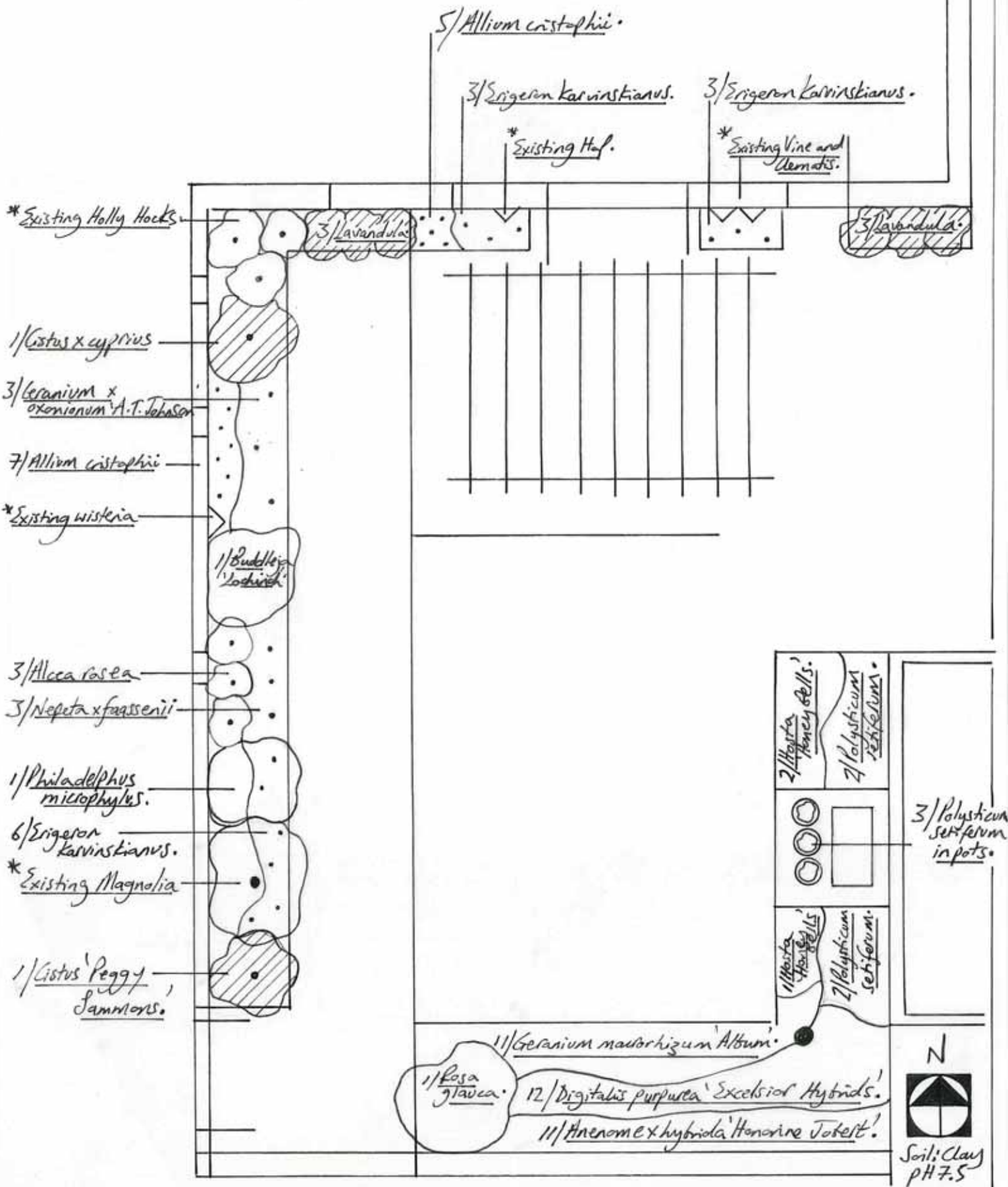


• Planting Plan 2 1:50 for The Circular Garden.

Drawing by Sara Barraud.



• Planting Plan 2 1:50 for The Courtyard Garden.  
Drawing by Sara Barraud.



• Planting plan for The Wild Garden and Tennis Court 2 1:200.

• Drawing by Siva Balland.

Newly planted avenue of old fashioned apple trees underplanted with spring flowering old fashioned daffodils.  
(Varieties to be decided.)  
Please see soft spec. 1 & 3.

4 newly planted fruit trees such as pear, quince, greengage and plum.  
(Varieties to be decided.)  
Please see soft spec. 3.

*S/Amelanchier lamarckii*  
(multi-stemmed)

Newly planted single row of the hedging. Please see soft works spec. 2.

*Prunus serotina*

*Acer rubinerve*

*Prunus serotina*

*Prunus maackii*

Newly grass seeded levelled games area.  
Please see soft works spec. 5 & 6.

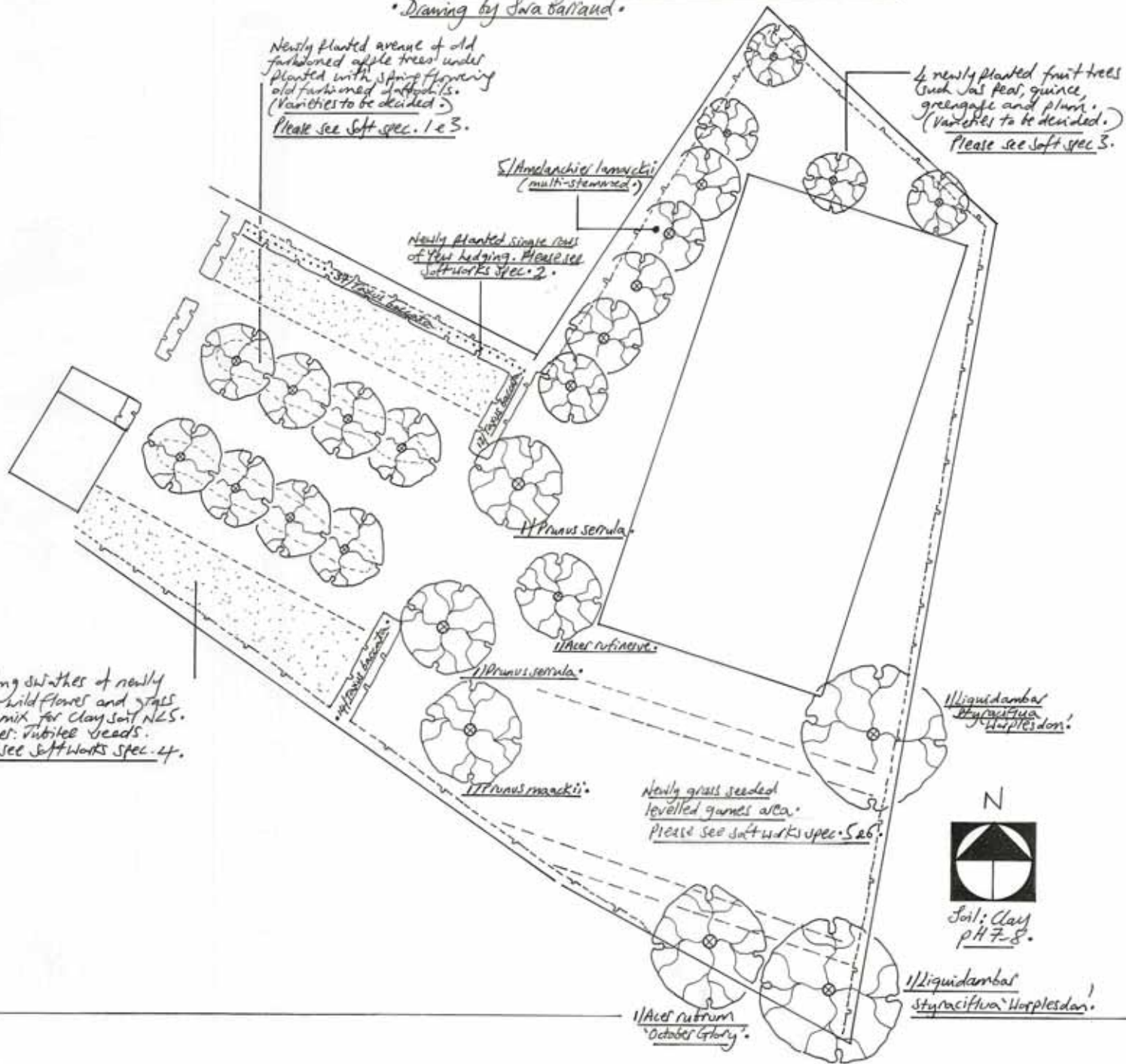
*Liquidambar styraciflua*  
'Horsfieldii'

Soil: Clay  
pH 7-8.

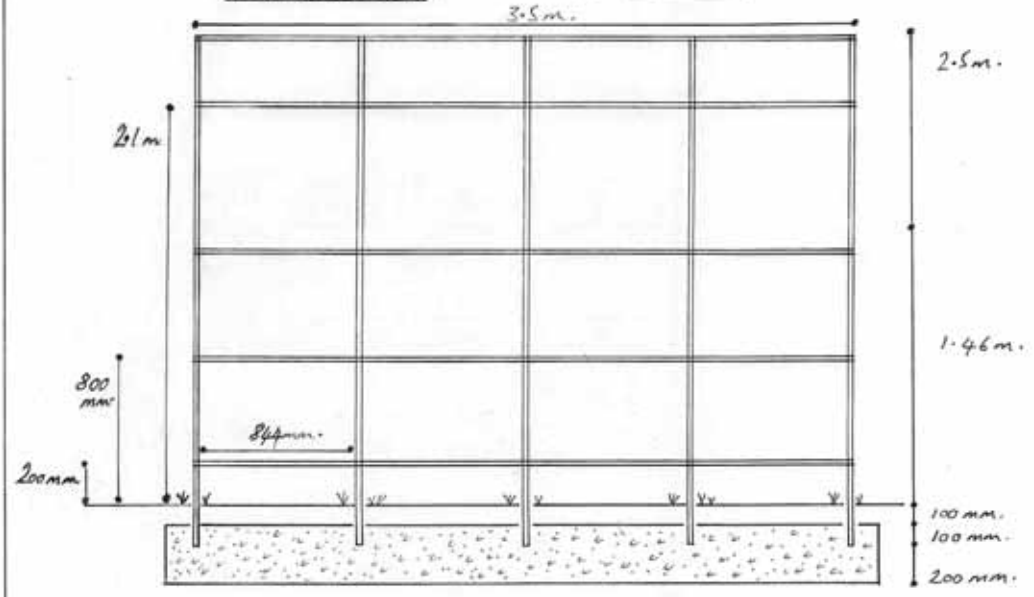
*Liquidambar styraciflua*  
'Horsfieldii'

*Acer rubrum*  
'October Glory'

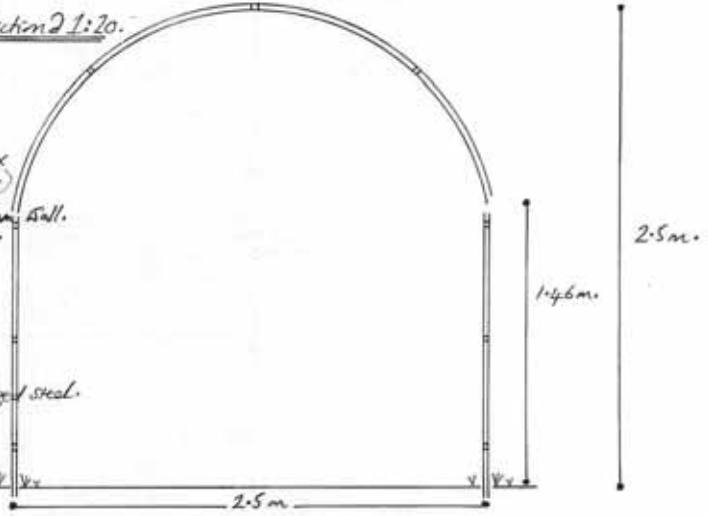
Two long swathes of newly sown wild flowers and grass seed mix for clay soil NLS.  
Supplier: Rubitec Seeds.  
Please see soft works spec. 4.



Arched Pergola for Herb Garden / Construction Drawing 3.  
Elevation 1:20.      Specification E1.



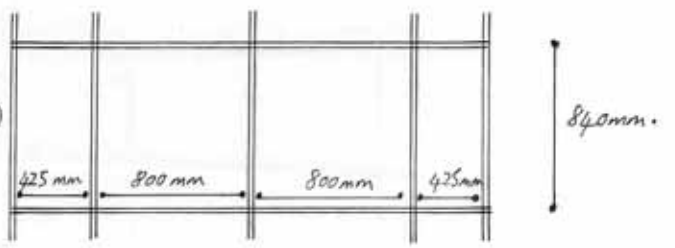
Section 2:1:20.



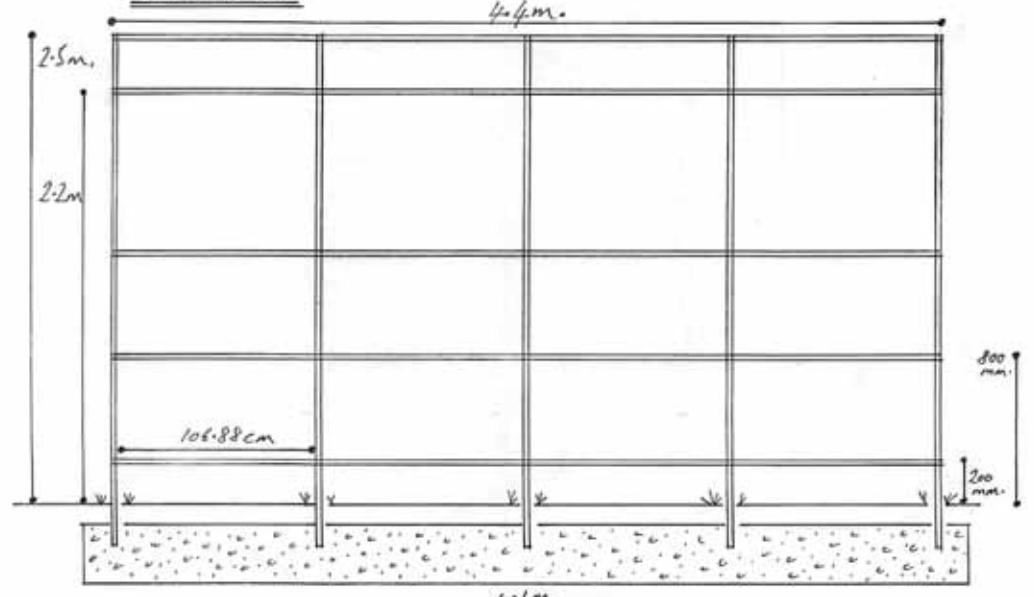
Arched Tunnel Pergola:

- Size: 3.5m long x 2.5m wide x 2.5m high (above ground).
- Material: 25mm x 25mm square tube galvanized steel with 3mm wall.
- Paint: powder coat / matt black.
- Screws: 8mm countersunk galvanized steel screws threaded into hoop.
- Hoops: 5
- Bars: 3 on each side / 3 over the arch.
- Concrete foundation: 3.8m long x 300mm wide x 300mm deep.

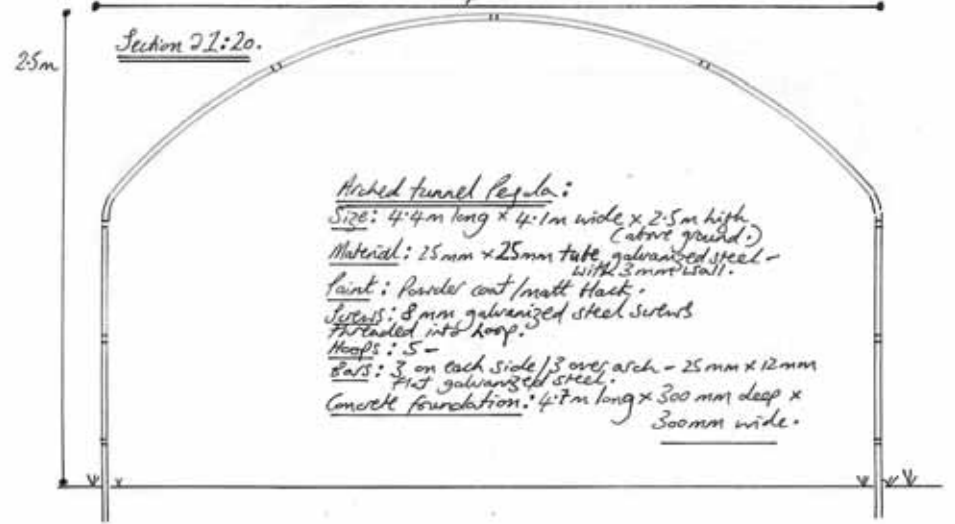
Plan 1:20  
(1 section only)



Arched Pergola for Wild Garden / Construction Drawing 4.  
Elevation 1:20.      Specification E1.



Section 2:1:20.



Arched tunnel Pergola:

- Size: 4.4m long x 4.1m wide x 2.5m high (above ground).
- Material: 25mm x 25mm tube galvanized steel with 3mm wall.
- Paint: powder coat / matt black.
- Screws: 8mm galvanized steel screws threaded into hoop.
- Hoops: 5
- Bars: 3 on each side / 3 over arch - 25mm x 12mm flat galvanized steel.
- Concrete foundation: 4.7m long x 300mm deep x 300mm wide.

Plan 2:1:20.  
(1 section only)



Planting Plan for The Herb Garden 2 1:50. Drawing by Sara Barraud.

