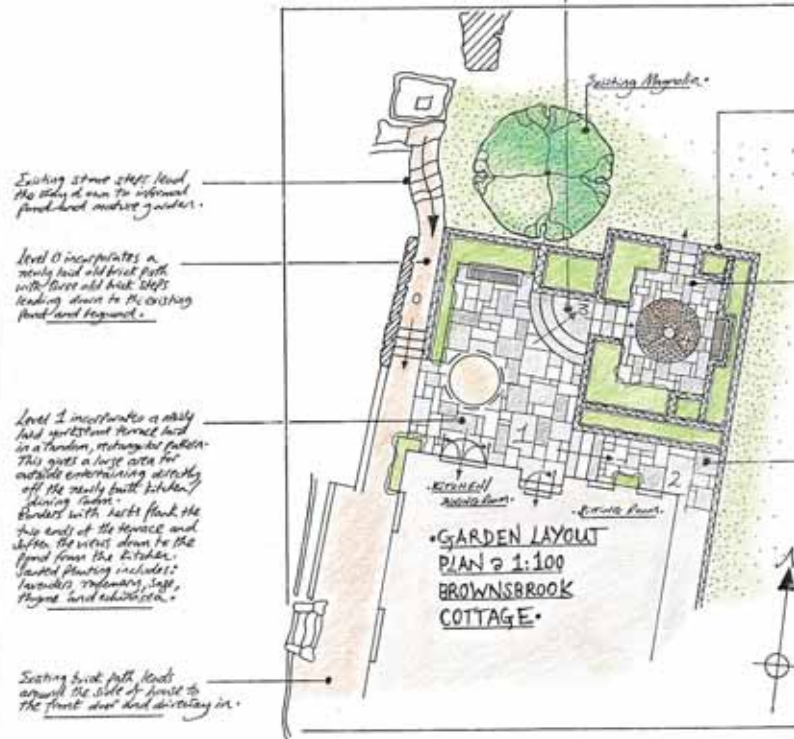


BROWNSBROOK COTTAGE - MR AND MRS HODDEN - GARDEN LAYOUT PLAN.

Level 3 forms a middle terrace reached via three 3y circled granite steps with old brick risers. A raised bed formed from old sandstone links the steps up to this terrace. Long flowering plants include laurel, verbena and astragalus.



Existing stone steps lead the stairs down to informal front-hand outdoor garden.

Level 0 incorporates a newly laid old brick path with three old brick steps leading down to the existing pond and fountain.

Level 1 incorporates a newly laid gravelled terrace laid in a random, rectangular pattern. This gives a large area for outside entertaining directly off the newly built kitchen. Borders with herbs flank the top ends of the terrace and after the view down to the pond from the kitchen. Laid planting includes: lavender, yarrow, sage, thyme and edelweiss.

Existing brick path leads around the side of house to the front door and driveway in.

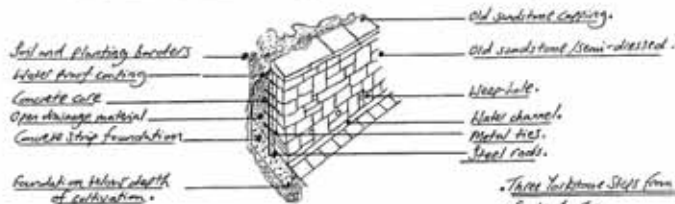
Refining wall formed from old semi-dressed sandstone laid in a traditional dogstone wall with concrete backing at least.

Level 2 forms the top terrace and is approached via three squared old granite steps with old brick risers. An area of old yorkishard with a circular brick detail forms a seating area with fantastic views over the pond and on to Robinson forest. Gardens planting from this terrace and including one half Philadelphus, lavender, cistus, oleander, geranium, anemone etc.

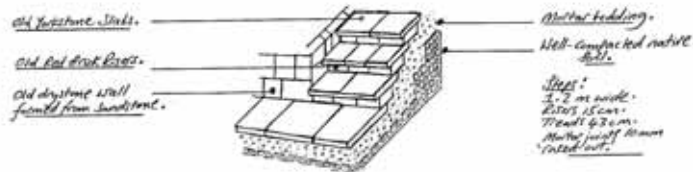
Level 3 incorporates three straight old granite steps with brick risers leading on to a gravelled path which runs up around the east side of the house. A raised bed runs along the path giving access down the living room. Front lawn planting includes ferns, foxglove and hostas planted in generous drifts.

Old Sandstone Retaining Wall (Not to scale.)

Wall to be built as a traditional dogstone wall with concrete backing at least.

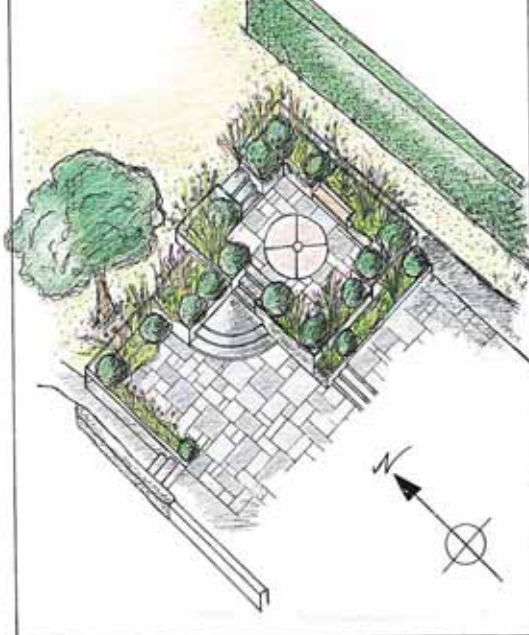


Three Yorkshire Steps from level 3 to level 4.
Scale 1:50.



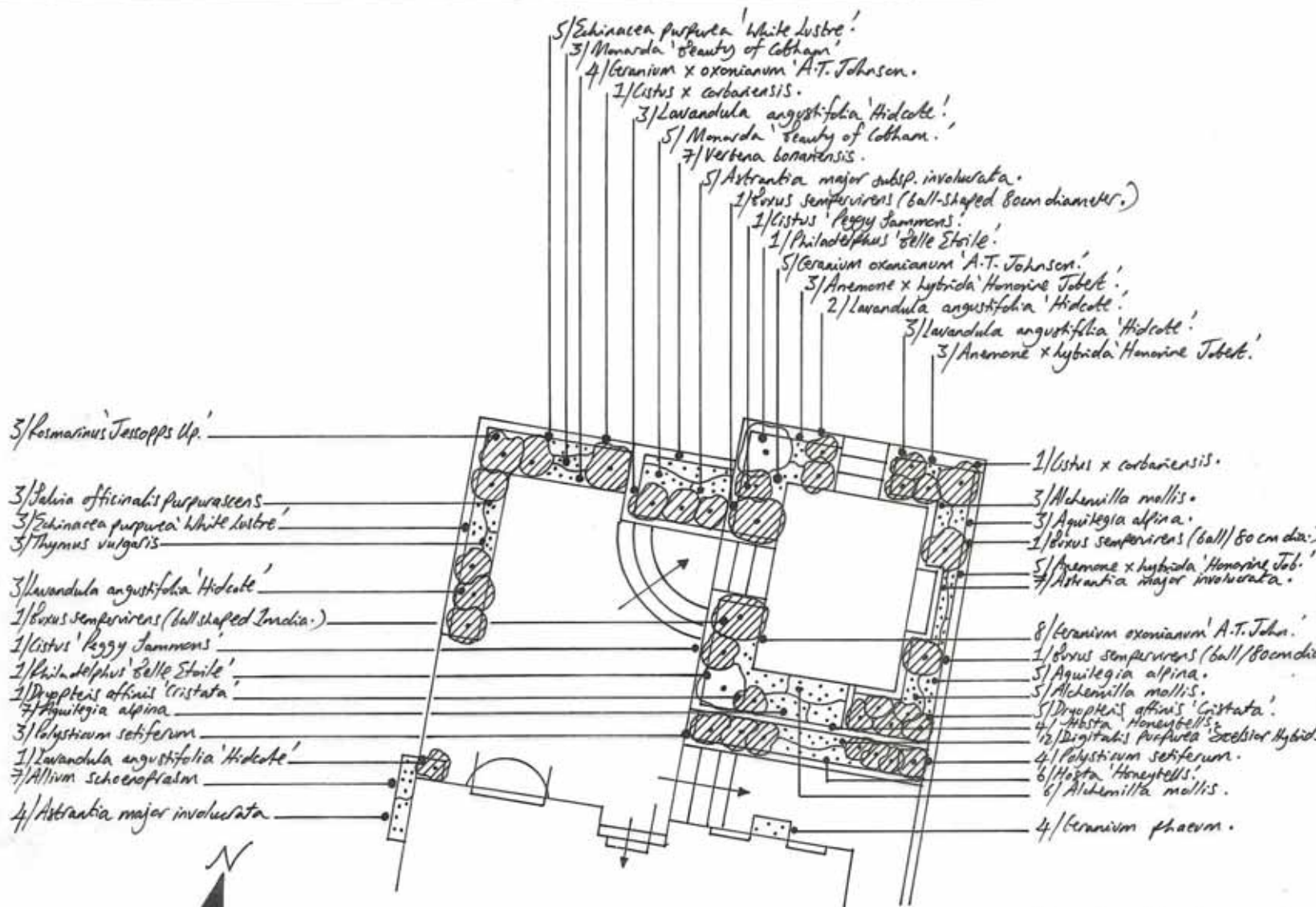
Technical Specifications:
Structure:
Concrete to 20mm depth. Grid to 10mm completed below base. Lay a 30mm concrete foundation and lay all subsequent in a random rectangular pattern. Stone foundation with brick joints. Mortar color to that set with sandstone / color to be added on site.
Crack Cure: on Terrace 4.
Lay on 10mm concrete foundation to reduce movement over joints. But joint and for joints with stone substrate. Lay brick bond to outer edge and dust with color by using brick on edge. Bricks to be laid parallel in suitable bond pattern. Place all masonry in water or wet on concrete base.
Steps:
1) Construct 3 straight granite steps leading from Terrace 1 to Terrace 2 - 1.2m wide. RISES 15cm / TREADS 42cm.
2) Construct 5 1/2 wide granite quarter steps from Terrace 2 to Terrace 3 - 575 m wide (RISES 15cm / TREADS 42cm).
3) Construct 3 straight granite steps from Terrace 3 to Terrace 4 - 1.2m wide. RISES 15cm / TREADS 42cm.
4) Construct 3 straight granite steps from Terrace 4 up to top grass level - 2m wide. RISES 15cm / TREADS 42cm.
5) Construct 2 curved granite steps from Terrace 2 to Terrace 1 - 2m wide.
6) Construct 1 straight granite step from utility room to Terrace 2 - 2.6m wide.
Wall and Borders:
Reform all beds and borders around perimeter with a good quality material to be set depth. Laid out to form retaining and sandstone walls.
Use outside step foundations for all new retaining walls. Construct holes concrete. Place all work perforating with incorporated concrete and soil. Lay face and cap using old sandstone random sized setting. Because cap and bed stone behind upper wall of Terrace 4. For stone underground to base of remaining fully large. Designate to incorporate in details for drawing.

ANOMOMETRIC DRAWING at 1:100 OF TERRACED AREAS OF BROWNSBROOK COTTAGE.



Areas of 1/2 m retaining terrace and steps with the remaining 2 m slope. Formed from retained old sandstone, retaining old red bricks, and retained old sandstone retaining walls.
Architectural finished planting raised bed, formed within raised beds and sand bed borders.
Gravel level:
Level 1 (Front path and main Terrace 2 - 1.2m wide) 25cm.
Level 2 - 1.2m wide by 25cm from 200. Raked border and height 25cm.
Level 3 - 1.2m wide by 25cm from 200. Raked border and height 25cm.
Level 4 - 1.2m wide by 25cm from 200. Raked 1/2 m wide border and height 15 cm.
This last retaining wall on road is height 1.8m on actual level height up to existing gravel level is 60 cm (1.2m x 0.5m).

Total height concrete from 200 is 1.76m.
Soil type: Chy P17.



- 3/ Rosmarinus 'Jesse's Op.
- 3/ Salvia officinalis purpurascens
- 3/ Echinacea purpurea 'White Lustre'
- 3/ Thymus vulgaris
- 3/ Lavandula angustifolia 'Hidcote'
- 1/ Buxus sempervirens (ball shaped 1andia.)
- 1/ Cistus 'Peggy Sammons'
- 1/ Philadelphus 'Belle Etoile'
- 1/ Dryopteris affinis 'Cristata'
- 7/ Aquilegia alpina
- 3/ Polystichum setiferum
- 1/ Lavandula angustifolia 'Hidcote'
- 7/ Allium schoenoprasum
- 4/ Astrantia major involuata

- 5/ Echinacea purpurea 'White Lustre'
- 3/ Monarda 'Beauty of Cobham'
- 4/ Geranium x oxonianum 'A.T. Johnson'
- 1/ Cistus x corbariensis
- 3/ Lavandula angustifolia 'Hidcote'
- 5/ Monarda 'Beauty of Cobham'
- 7/ Verbena bonariensis
- 5/ Astrantia major subsp. involuata
- 1/ Buxus sempervirens (ball-shaped 80cm dia.)
- 1/ Cistus 'Peggy Sammons'
- 1/ Philadelphus 'Belle Etoile'
- 5/ Geranium oxonianum 'A.T. Johnson'
- 3/ Anemone x hybrida 'Honorine Jobert'
- 2/ Lavandula angustifolia 'Hidcote'
- 3/ Lavandula angustifolia 'Hidcote'
- 3/ Anemone x hybrida 'Honorine Jobert'

- 1/ Cistus x corbariensis
- 3/ Alchemilla mollis
- 3/ Aquilegia alpina
- 1/ Buxus sempervirens (ball) 80cm dia.
- 5/ Anemone x hybrida 'Honorine Job.'
- 7/ Astrantia major involuata
- 8/ Geranium oxonianum 'A.T. John.'
- 1/ Buxus sempervirens (ball) 80cm dia.
- 5/ Aquilegia alpina
- 5/ Alchemilla mollis
- 5/ Dryopteris affinis 'Cristata'
- 4/ Hosta 'Honeybells'
- 12/ Digitalis purpurea 'Excalibur Hybrids'
- 4/ Polystichum setiferum
- 6/ Hosta 'Honeybells'
- 6/ Alchemilla mollis
- 4/ Geranium phaeum

Planting for pockets in drystone walls:
 Armeria pseudameria 5.
 Asplenium schobependrium 5.
 Alchemilla alpina 5.
 Digitalis purpurea Excalibur hybrids 5.

Planting List:	Total:
Shrubs:	
Buxus sempervirens (ball-shaped 1m diameter)	2
Buxus sempervirens (ball-shaped 80cm dia.)	2
Cistus 'Peggy Sammons' 1+1	2
Cistus x corbariensis 1+1	2
Lavandula angustifolia 'Hidcote' 3+1+3+2+3	12
Philadelphus 'Belle Etoile' 1+1	2
Robinaria officinalis 'Jesse's Upright' 3	3
Perennials:	
Alchemilla mollis 3+5+6	14
Alchemilla alpina 5	5
Allium schoenoprasum 7	7
Anemone x hybrida 'Honorine Jobert' 3+3+5	11
Aquilegia alpina 7+3+5	15
Armeria pseudameria 5	5
Astrantia major involuata 4+5+7	16
Digitalis purpurea 'Excalibur Hybrids' 12+5	17
Geranium phaeum 4	4
Geranium x oxonianum 'A.T. Johnson' 4+5+8	17
Echinacea purpurea 'White Lustre' 3+5	8
Hosta 'Honeybells' 4+6	10
Monarda 'Beauty of Cobham' 3+5	8
Salvia officinalis purpurascens 3	3
Thymus vulgaris 3	3
Verbena bonariensis 7	7
Ferns:	
Asplenium schobependrium 5	5
Dryopteris affinis 'Cristata' 1+5	6
Polystichum setiferum 3+4	7

Project: Sainsbury Cottage.

Date: February 2002.

Scale: 1:100.

Job no: 017.

Drawing by: Sara Barraud.

Revisions: One.

Drawing title: Planting Plan for Terrace.

Sara Barraud
 garden designer

by Cottage
 Poundbridge Lane
 Penrhyst
 Here

TN11 8AG
 Tel: 01892 871561
 Mob: 07771 811566
 sarabarraud@yahoo.com